

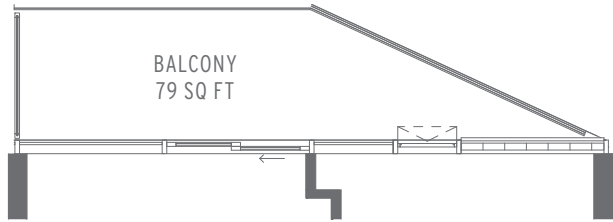
PERCH

HUMMINGBIRD 1 BED + DEN, 2 BATH

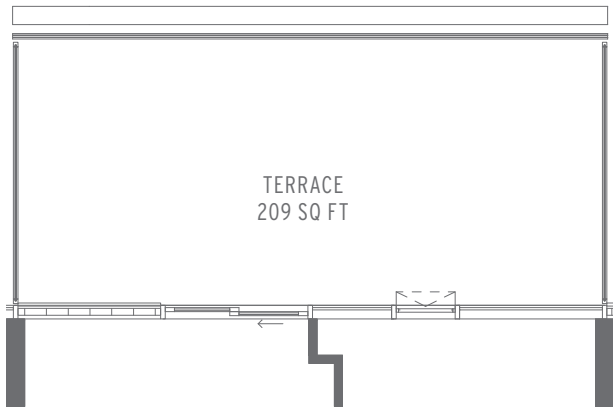
INTERIOR SQ FT: 577

EXTERIOR SQ FT: 52

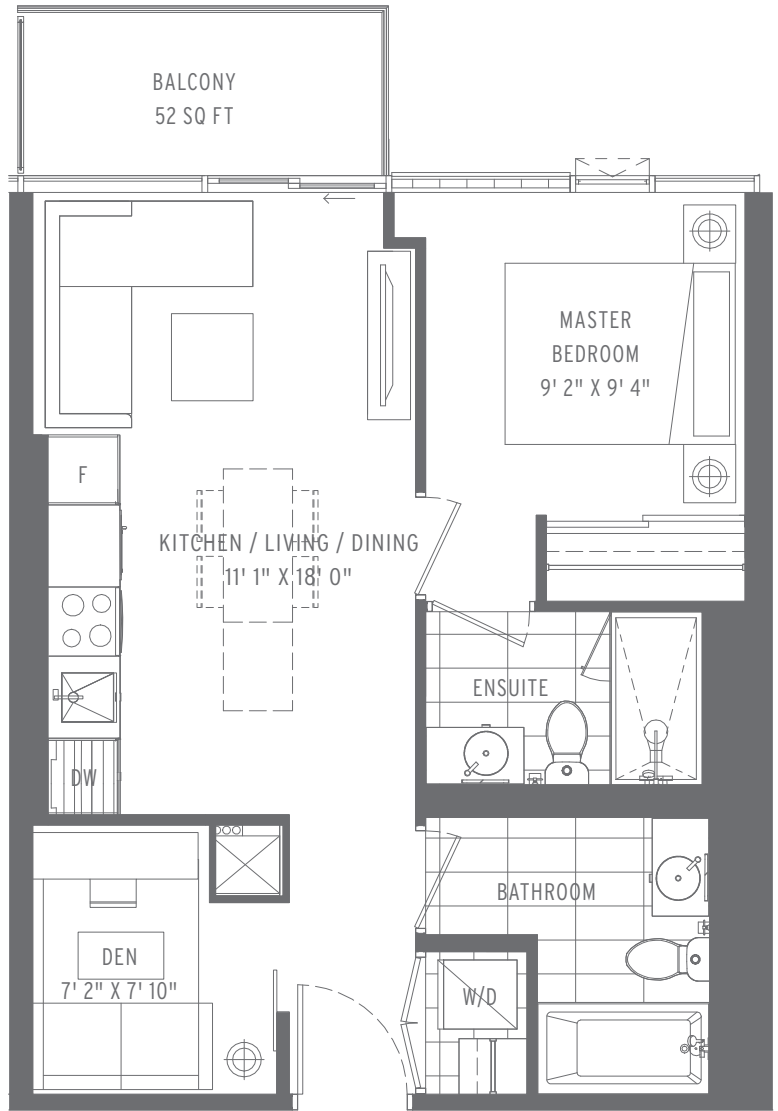
TOTAL SQ FT: 629



UNITS 807, 809, 1007 & 1009



UNITS 607 & 609



UNITS 707, 709, 907, 909, 1107 & 1109



LEVEL 06



LEVEL 07 & 09



LEVEL 08 & 10



LEVEL 11



This plan is not to scale and is subject to architectural review and revision, including without limitation, the Unit being constructed with a layout that is the reverse of that set out above. All drawings, floorplans, renderings, materials, finishes, tile patterns, specifications, details and dimensions, if any, are approximate and subject to change without notice. Actual floor area may vary from that stated herein. Furniture and island not included. Bulkheads are not shown on this plan and will be located in areas of the Unit. Certain units may have 'bird-friendly' windows or balcony rail. Balconies, terraces and patios, if any, are exclusive use common elements or common elements as per plan, may vary depending on floor level, location and other factors, are shown for display purposes only and location and size are subject to change without notice. Window, spandrel panel, door, patio, terrace and balcony locations, size and type may vary without notice. E. & O. E. October 27, 2020